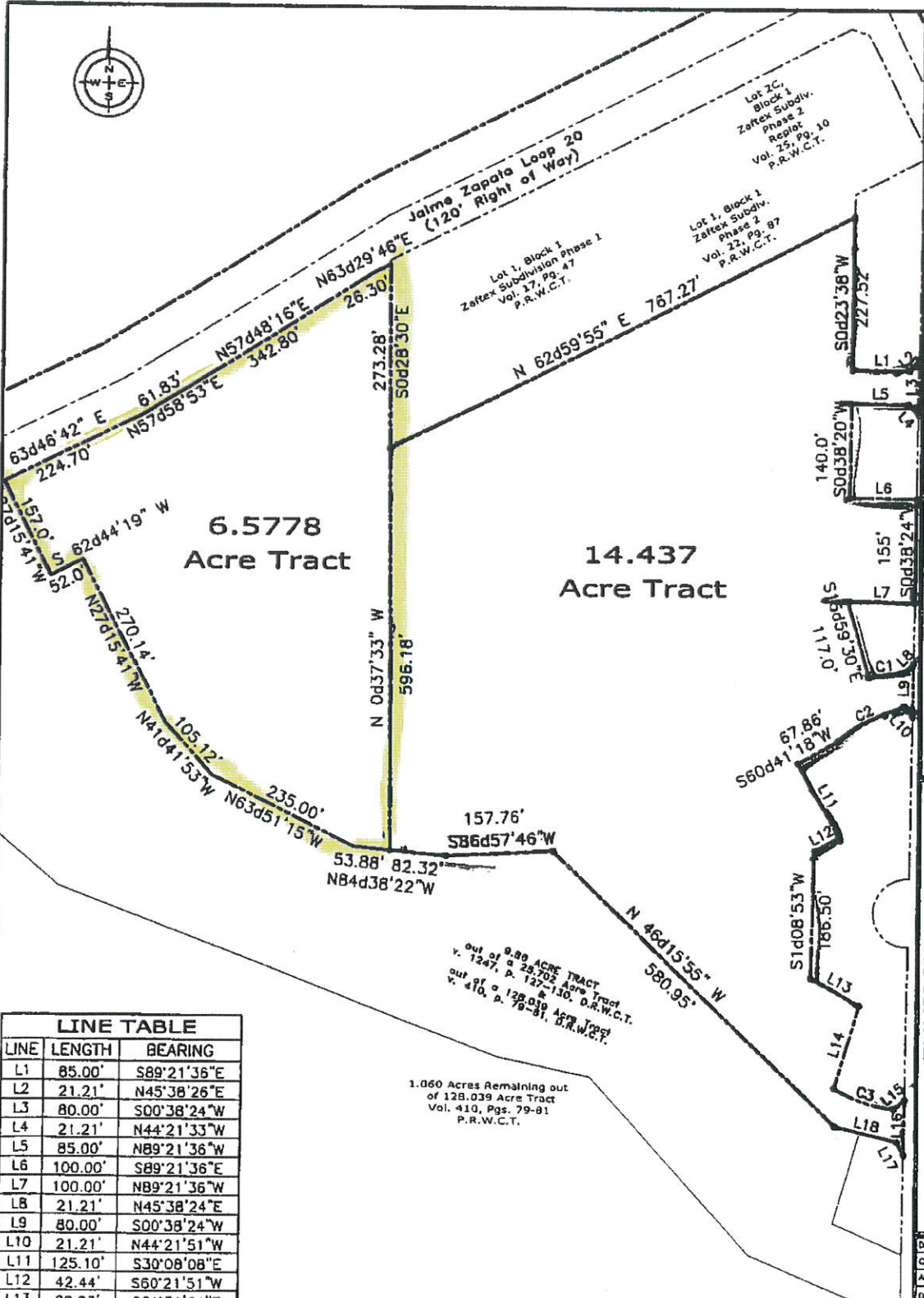


g
10/5/2012



LINE TABLE		
LINE	LENGTH	BEARING
L1	85.00'	S89°21'36"E
L2	21.21'	N45°38'26"E
L3	80.00'	S00°38'24"W
L4	21.21'	N44°21'33"W
L5	85.00'	N89°21'36"W
L6	100.00'	S89°21'36"E
L7	100.00'	N89°21'36"W
L8	21.21'	N45°38'24"E
L9	80.00'	S00°38'24"W
L10	21.21'	N44°21'51"W
L11	125.10'	S30°08'08"E
L12	42.44'	S60°21'51"W
L13	85.00'	S89°21'36"E

ENGINEER
MEJIA ENGINEERING CO.
1202 HOUSTON ST. SUITE 200
LUBBOCK, TEXAS 79604
(806) 728-5667

MEJIA ENGINEERING COMPANY
F-3885
1505 WILSON STREET, SUITE 200
LUBBOCK, TEXAS 79607
PH: (806) 728-5667
FAX: (806) 728-7870

EXHIBIT
14.437 & 6.5778 Acre Tract
SITUATED IN PORCION 32, ABSTRACT 296 BEING OUT OF
128.039 ACRE TRACT RECORDED IN VOLUME 410,
PAGES 79-81 WEBB COUNTY DEED RECORDS,
WEBB COUNTY, TEXAS

DRAWN BY: E.G.
CHECKED BY: A.A.
APPROVED BY: C.V.M.
DATE:

Pendence Hill Regional Park\eng\Exhibit\ Preliminary Plat-14.437&6.5778 Acres.dwg

1.060 Acres Remaining out
of 128.039 Acre Tract
Vol. 410, Pgs. 79-81
P.R.W.C.T.

out of a 0.89 ACRE TRACT
v. 1247, p. 127-130, O.R.W.C.T.
out of a 128.039 Acre Tract
v. 410, p. 79-81, O.R.W.C.T.